

## *A Tisket, A Tasket* *Twelve Months of Baskets*

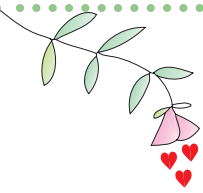
Free Mystery Block of the Month Pattern from Bunny Hill Designs

### *Block Two, Applique Version*



- Cut appliqué background square 8 ½" x 8 ½" .
- Center appliqué on background fabric and appliqué in place using your favorite method. Make sure the finished bottom of your basket is ¾" up from bottom raw edge of background fabric.
- Appliqué basket, birds and hearts.
- Place your pattern and block (right side up) over a light box, or bright window and trace the embroidery lines onto the background fabric with a fabric pencil, brown Micron pen # 01, or a water erasable marker.
- Using two strands of DMC embroidery floss #471 green, embroider vines and leaves with a tiny stem stitch.
- Using two strands of DMC embroidery floss #801 brown, embroider bird eyes with a French knot. Wrap thread around needle 3 times. Outline bird beaks with a tiny back stitch and fill in with a satin stitch.

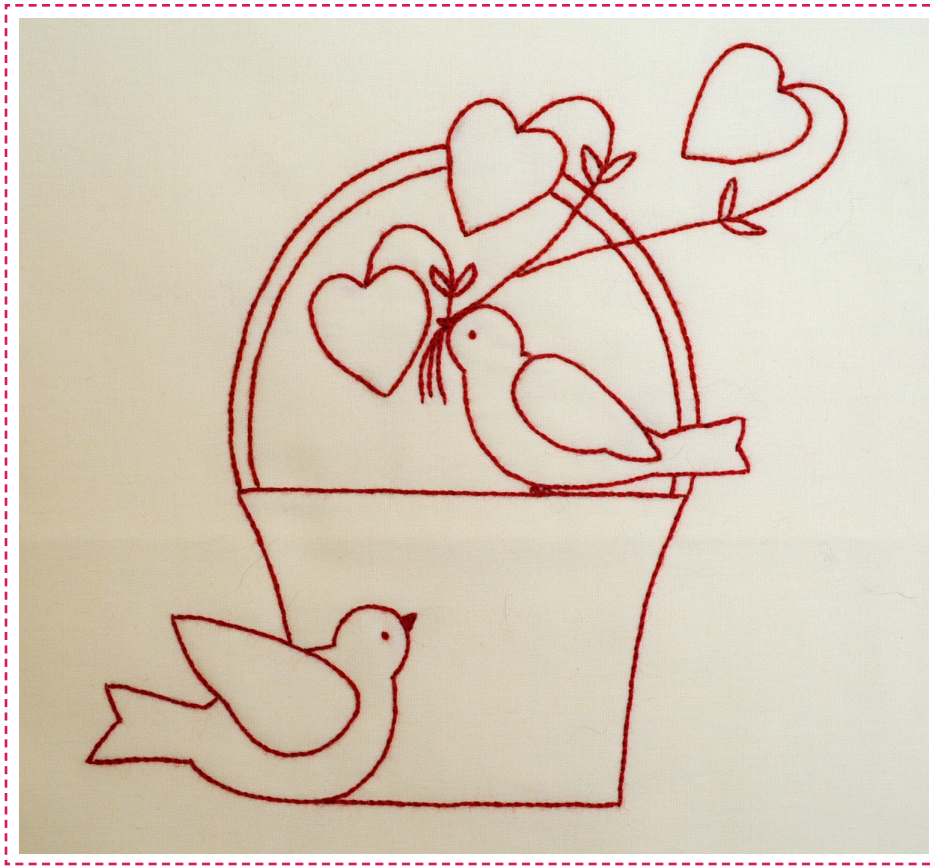




## *A Tisket, A Tasket* *Twelve Months of Baskets*

Free Mystery Block of the Month Pattern from Bunny Hill Designs

### *Block Two, Redwork Version*



Embroidery floss: DMC color # 304 red

Note: Cut background  $9\frac{1}{2}'' \times 9\frac{1}{2}''$  and trim to  $8\frac{1}{2}'' \times 8\frac{1}{2}''$  after embroidery is complete. This will allow for a bit of shrinkage from your embroidery stitches.

Place pattern and background fabric right side up over a light box or bright window. Center background fabric over pattern. Using a red Micron permanent marking pen # 01, carefully trace pattern onto background fabric. (Draw carefully, the Micron pen is permanent. If you don't trust yourself to draw with a steady hand, trace with a fabric pencil or a water erasable marker.)

Embroidery Backing:

Cut a piece of lightweight fusible interfacing or white flannel  $9\frac{1}{2}'' \times 9\frac{1}{2}''$ . If using flannel, simply place the flannel behind your background fabric. If using fusible interfacing, iron to the wrong side of the background fabric following manufacturer's instructions.

Embroider through both the background fabric and the interfacing or flannel.

Using 2 strands of DMC embroidery floss, #304 red, embroider basket, birds and hearts with a tiny stem stitch. Embroider bird eyes with a French knot (wrap thread around needle 3 times). Outline bird beaks with a tiny back stitch and fill in with a satin stitch.



*A Tisket, A Tasket*  
*Block Two*

