



Twelve Months of Snowmen!
Free Block of the Month Pattern from Bunny Hill Designs
55 ½" x 55 ½" Quilt

Being "Snowbound" has never been so much fun! Imagine, 12 months of snowmen, combined with an Irish Chain block, to give you a Christmas quilt you will love! It's the perfect gift for yourself or that special friend! Join me in the fun! It's warm and toasty inside and I'll bring the hot chocolate! We're going to be "Snowbound" together!

Fabric tips:

I'm giving you the quilt layout now, so you can start thinking about fabric. I've selected "Rural Jardin" from Moda Fabrics and The French General, as the main fabric for "Snowbound". The soft blue in this line is perfect to show off the white snowmen. "Rural Jardin" is shipping to quilt stores in March, so if you think you'd like to use the same fabric as I did, you have time to find it. Remember, when choosing your fabrics, select a background that will compliment the snowmen.

Because the "white" in this line is actually a creamy white, I selected a "creamy" white for all my snowmen. I've used a Moda Muslin Mate Basic, # 9930-14 as the snowman fabric. You may choose to vary your snowmen with different whites, flannel, or wool. You'll need about ¾ yd total for all the snowmen, and assorted scraps for the remaining appliqué.

The blocks are simple and the appliqué is easy! You'll need to know a few embroidery stitches; back stitch, satin stitch, stem stitch, straight stitch, cross stitch, French knots and chain stitch. A good place to find instructions for these stitches is to do a Google search on the internet.

Appliqué:

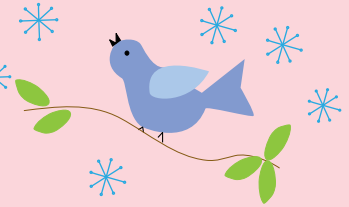
- Appliqué using your favorite method.
- Center appliqué on each block following color photo and instructions for each block.
- Remember the patterns have NOT been reversed for fusible web appliqué.

Embroidery:

- All embroidery uses 2 strands of DMC embroidery floss, and a tiny stem stitch as the main stitch. Snowmen arms are chain stitch, noses are outlined with a tiny back stitch and filled in with a satin stitch, some buttons are cross stitched, wording is back stitched and eyes/mouths are French Knots. If you're using the "Rural Jardin" fabric, I suggest using DMC #816 for a redwork quilt or DMC #930 or #931, or Cosmo #733 for a bluework quilt.



SNOWBOUND



Block One



- Cut appliqué background square 9 ½" x 9 ½". (You may want to cut a bit larger and trim to size after appliqué is complete).
- Center appliqué on background fabric. Place finished bottom of cupcake ½" up from bottom raw edge of background fabric.
- Mark eyes, nose and "x's" before you appliqué snowman.
- Trace "Joy" on cupcake before you appliqué in place.
- Appliqué cupcake, snowman, bird and ribbon in place using your favorite method of appliqué.
- Place your pattern and block (right side up) over a light box, or bright window and trace snowman's arms, bird's eye, and bird's beak for embroidery.

Embroidery: all embroidery uses 2 strands of floss

- Arms: Chain stitch, DMC # 300 brown or dark brown of choice
- Eyes & mouth: French knots, DMC # 310 black, 2 strands. Wrap floss around needle 3 times
- Nose: Outline with tiny back stitch, fill in with satin stitches, lengthwise, DMC #3776 orange
- Buttons: Cross stitch, DMC #310 black
- Bird's beak: 2 straight stitches, DMC # 310 black; eye, French knot DMC #310 black
- "Joy": back stitch, DMC # 3777



Fabric Requirements

Irish Chain Blocks: three fabrics

½ yd Red: 13537-22

¾ Red/White: 13534-11

¾ Blue/White: 13539-11

Appliqué Background:

1 ½ yd 13539-17

Inner Border & Binding: 1 yd 13529-23

Outer border: 1 yd TBA

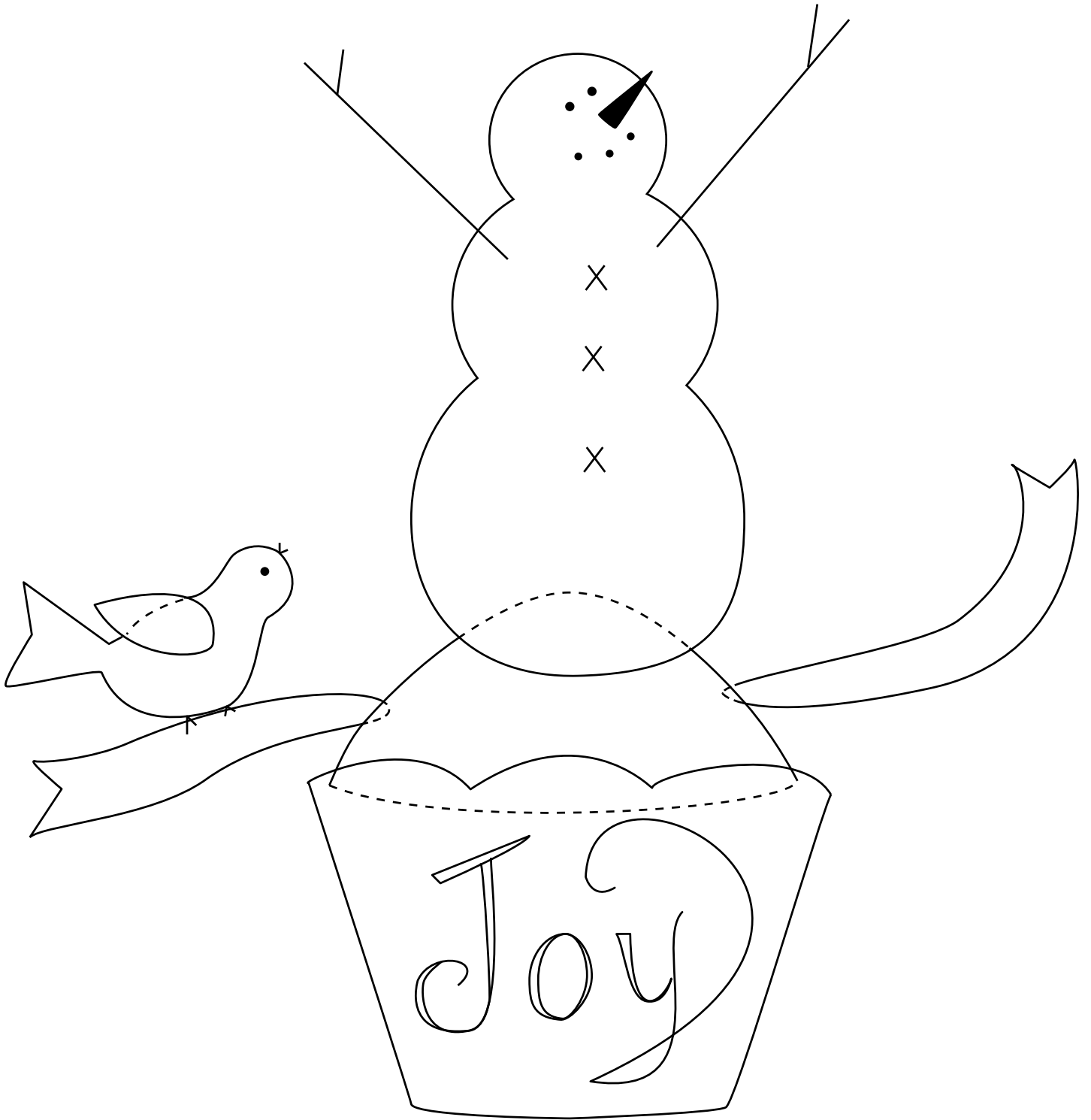
Backing: 3 ¼ yd of your favorite fabric

Snowmen

1 yd Moda Muslin Mate Basic, # 9930-14

Appliqué: Scraps of assorted fabrics

Snowbound



Block One

Snowbound

55 1/2" x 55 1/2" after adding an outer 4" border (not included in this picture)

